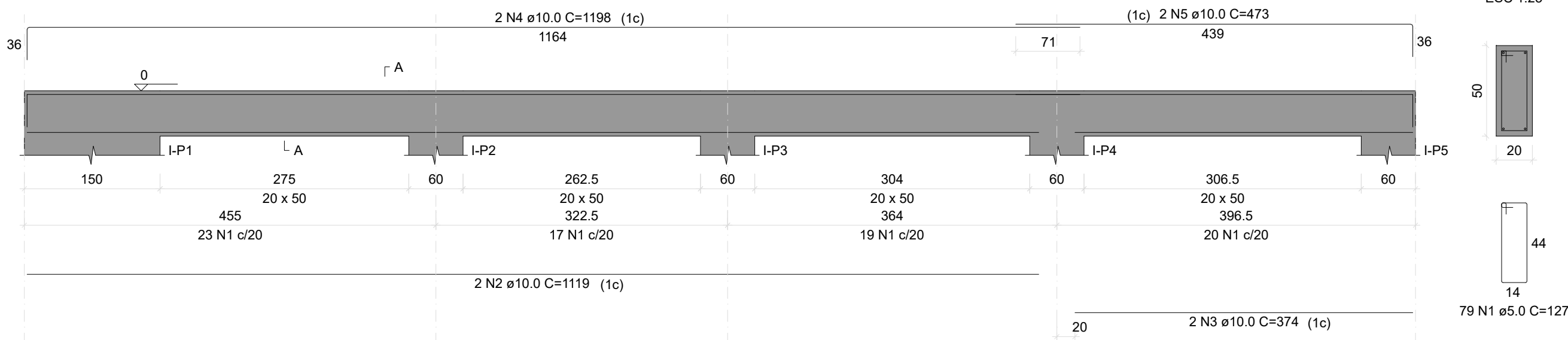


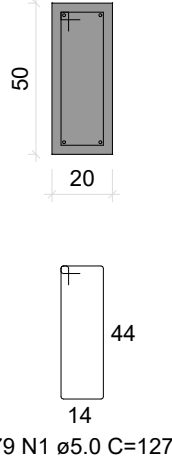
I-V1

ESC 1:50



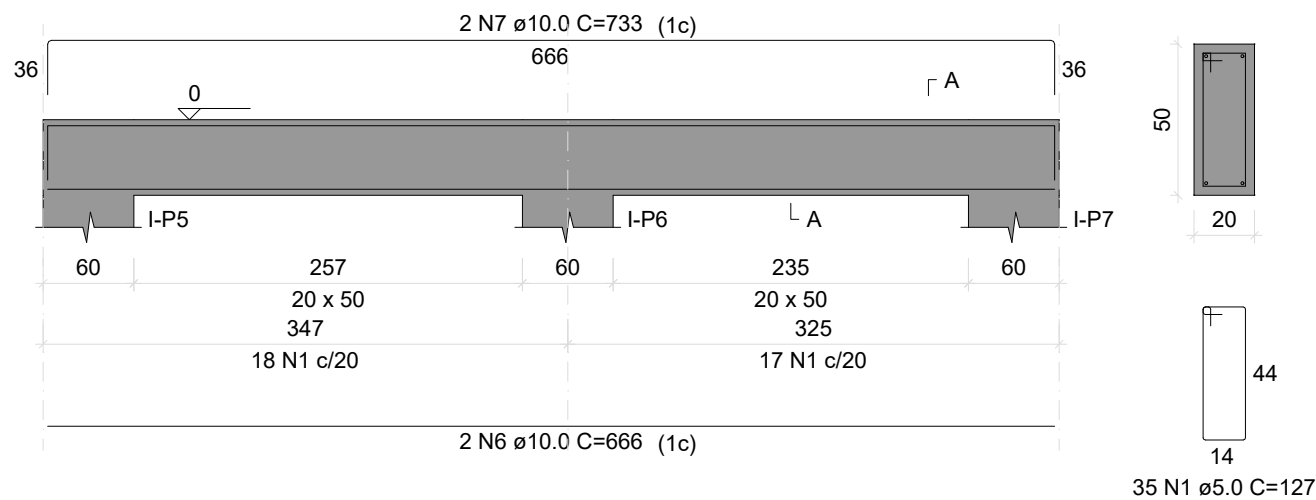
SEÇÃO A-A

ESC 1:25



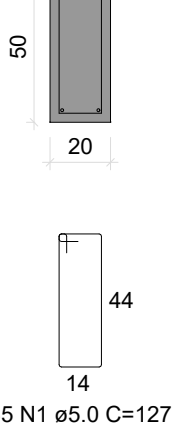
I-V2

ESC 1:50



SEÇÃO A-A

ESC 1:25



RELAÇÃO DO AÇO

AÇO	N	DIAM (mm)	QUANT	C.UNIT (cm)	C.TOTAL (cm)
CA60	1	5.0	660	127	83820
CA50	2	10.0	2	1119	2238
	3	10.0	2	374	748
	4	10.0	10	1198	11980
	5	10.0	2	473	946
	6	10.0	2	666	1332
	7	10.0	2	733	1466
	8	10.0	4	1074	4296
	9	10.0	4	986	3944
	10	10.0	8	1040	8320
	11	10.0	4	1120	4480
	12	10.0	4	940	3760
	13	10.0	2	447	894
	14	10.0	2	514	1028
	15	10.0	2	730	1460
	16	10.0	2	510	1020
	17	10.0	2	1194	2388
	18	10.0	2	225	450
	19	10.0	2	424	848
	20	10.0	2	460	920

RESUMO DO AÇO

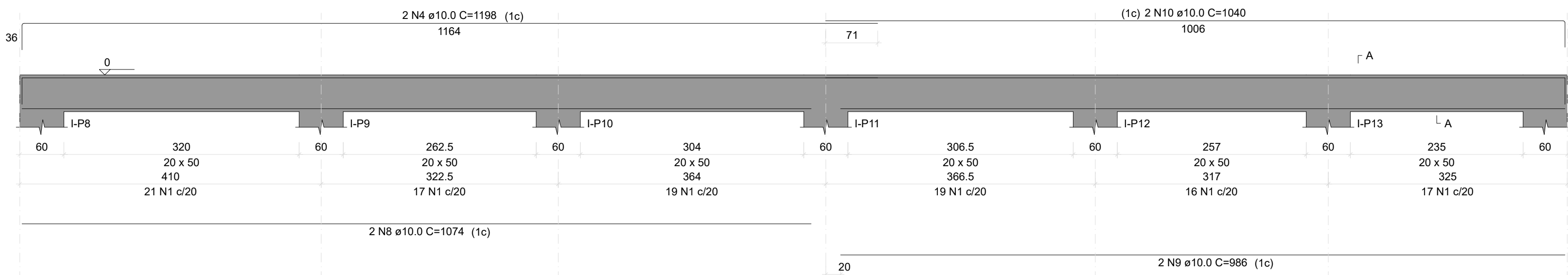
AÇO	DIAM (mm)	C.TOTAL (m)	PESO + 10% (kg)
CA50	10.0	525.8	356.6
CA60	5.0	838.2	142.1
PESO TOTAL (kg)			
CA50			356.6
CA60			142.1

Volume de concreto (C-25) = 9.78 m³

Área de forma = 117.63 m²

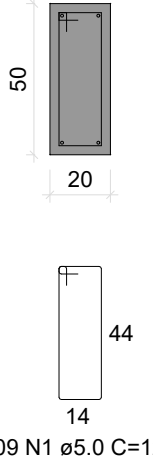
I-V3

ESC 1:50



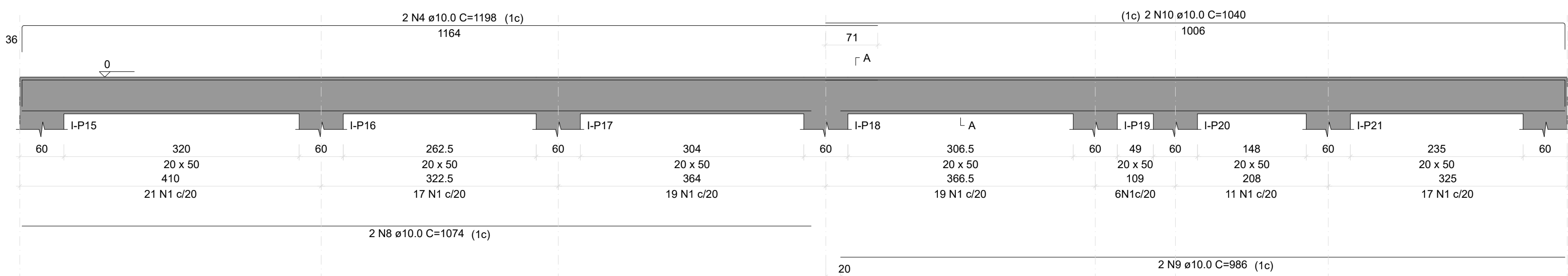
SEÇÃO A-A

ESC 1:25



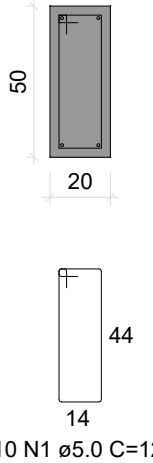
I-V4

ESC 1:50



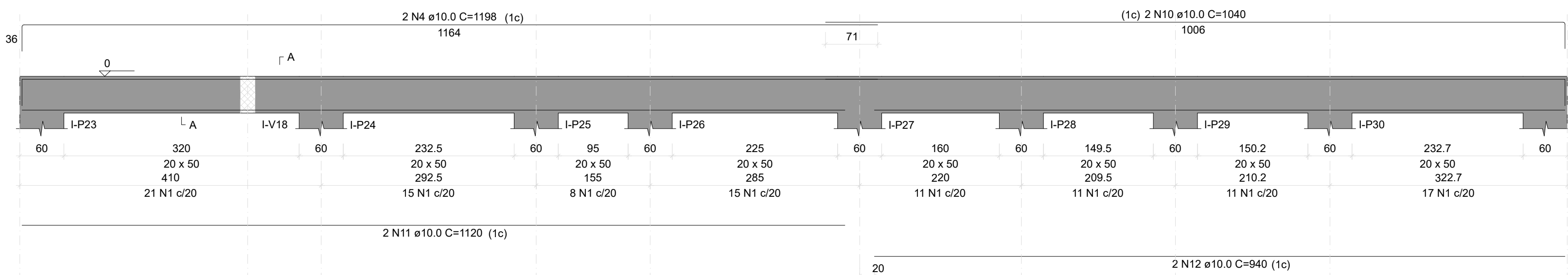
SEÇÃO A-A

ESC 1:25



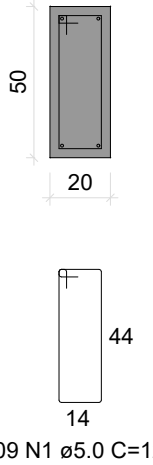
I-V5

ESC 1:50



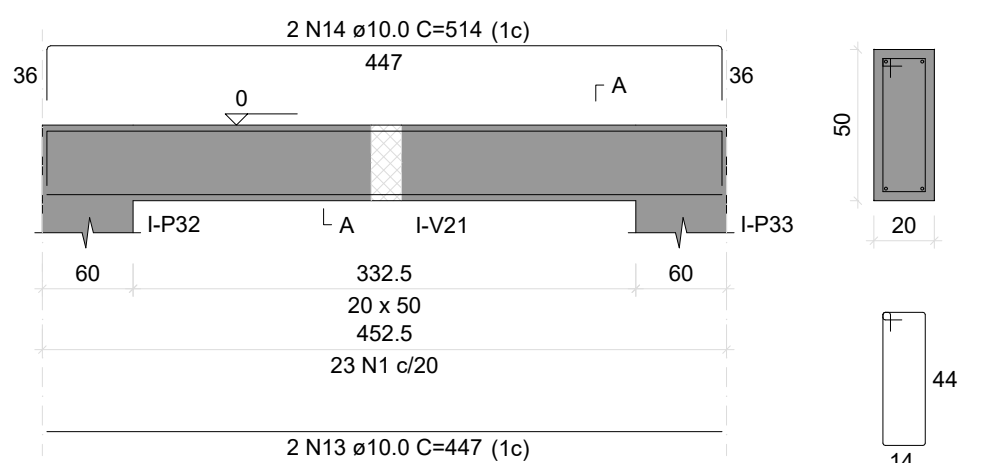
SEÇÃO A-A

ESC 1:25



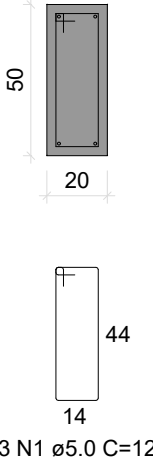
I-V6

ESC 1:50



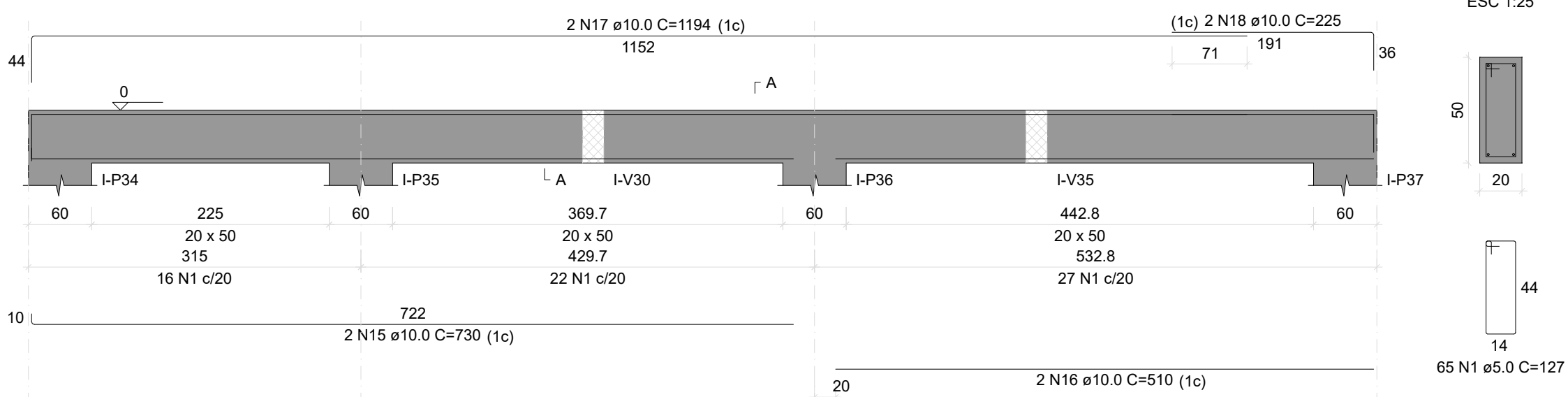
SEÇÃO A-A

ESC 1:25



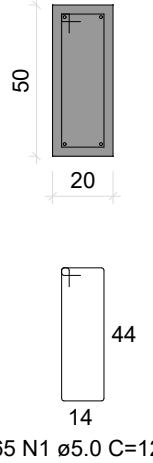
I-V7

ESC 1:50



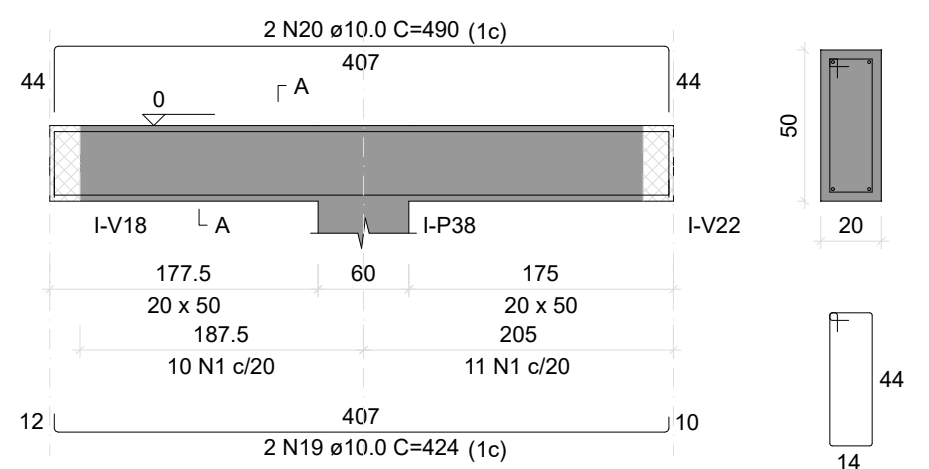
SEÇÃO A-A

ESC 1:25



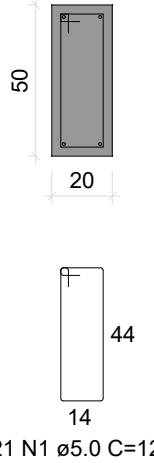
I-V8

ESC 1:50



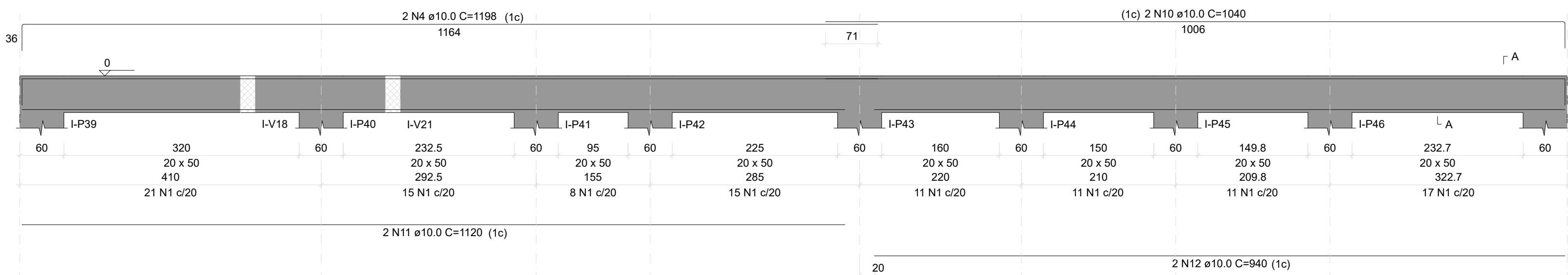
SEÇÃO A-A

ESC 1:25



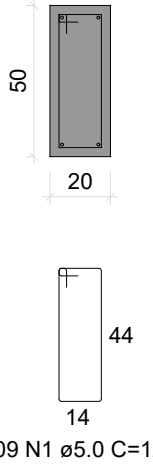
I-V9

ESC 1:50



SEÇÃO A-A


ESC 1:25



TODAS AS MEDIDAS E NÍVEIS DEVERÃO SER CONFERIDOS NO LOCAL.

R003			
R002			
R001			
REVISÃO	ALTERAÇÕES	EMIÇÃO	RESPONSÁVEL

UNIDADE DE SAÚDE QUINTA DO PORTAL

<div></div> <div>PREFEITURA MUNICIPAL DE PORTO ALEGRE</div> <div>SECRETARIA MUNICIPAL DE OBRAS E INFRAESTRUTURA</div> <div>DIRETORIA DE PROJETOS E OBRAS VIÁRIAS</div>				
RESPONSÁVEIS TÉCNICOS PROJETO DE ARQUITETURA: JULIANO FABRO ARQUITETO E URBANISTA CAU.A22875-3 ID. FUNC. 1609270		PROJETO EXECUTIVO ESTRUTURAL: AMANDA DA CUNHA FIGUEIRA ENGENHEIRA CIVIL CREA.RS193.391 ID. FUNC. 1606638		COORDENADOR CÉSAR FABRÍCIO BREDA DESENHO AMANDA
OBRA US QUINTA DO PORTAL		ÁREA 672.53 m²		
ENDEREÇO ESTRADA AFONSO LOURENÇO MARIANTE, Nº 5547 - LOMBA DO PINHEIRO		MUNICÍPIO PORTO ALEGRE/RS		
PROJETO EXECUTIVO ESTRUTURAL		ASSUNTO SETOR SI VIGAS DE FUNDAÇÃO - 01		Nº PRANCHA PE06
ESCALA INDICADA	DATA ABRIL/2024			
NOME ARQUIVO USQP-2024-EST-PEE.dwg				